

# NMCNP Study Aids: Evergreen Shrubs that May Appear on the NMCNP exam.

These materials were donated by the author to the CNGA in recognition of scholarships given by the Colorado Nursery Research and Education Foundation (CNREF) in support of students at FRCC.

**If you find these materials helpful, please donate to CNREF today!**

Non-exclusive use of the following photos/materials is hereby granted to the Colorado Nursery & Greenhouse Association for use by individuals seeking Certification as a Colorado Certified Nursery Professional. The Author reserves all rights to these Images/Materials. Users of this presentation do not acquire any copyright, ownership or equivalent rights in or to any Images. Users must contact the Author if they wish to use any of these photos for other purposes.

## Author:

Ray Daugherty, CCNP No. 369,  
Horticulture & Landscape Technologies Faculty, Front Range Community College  
rdaugh4908@aol.com or Tel. 303-246-4414.

Keith A Williamson, CCNP No. 115 (2013 New Mexico supplement)

*Abelia* 'Edward Goucher'

(a-BEL-ee-a)

Edward Goucher Glossy Abelia

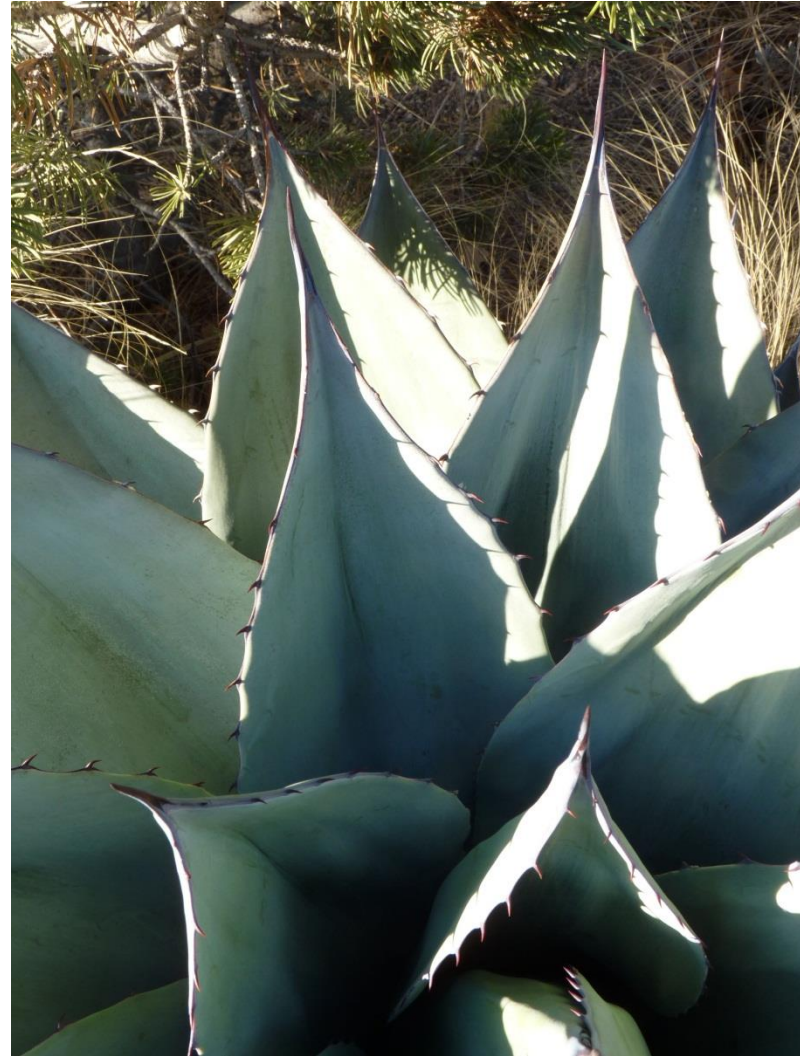
*Agave havardiana*

(ah-GA-veh ha-var-dee-AN-uh)

Havard's Century Plant, Havard's Agave



© Keith A Williamson

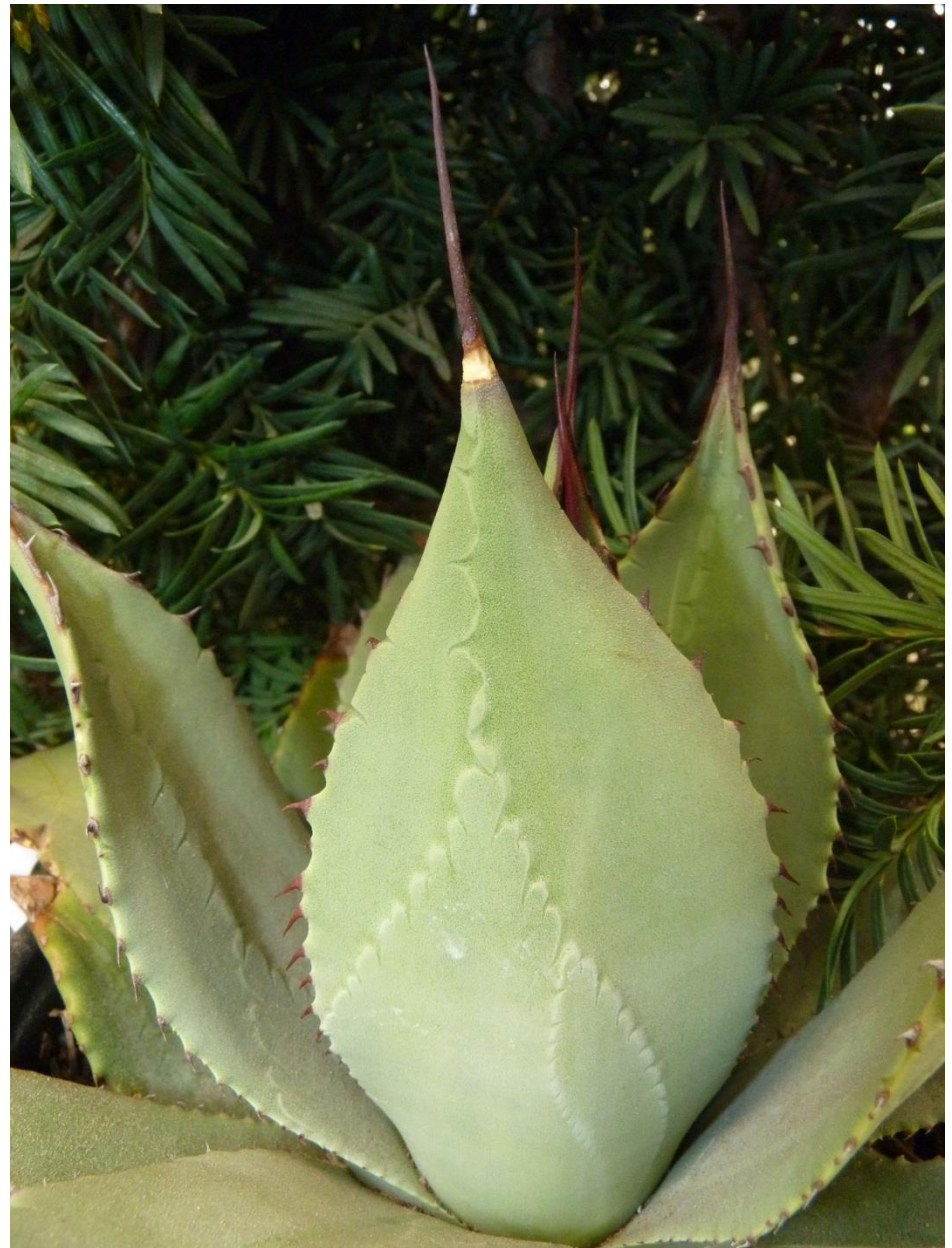


*Agave parryi* (& *A. par. ssp. neomexicana*)  
(ah-GA-veh PAIR-ee-ee)

Parry's Agave



© Keith A Williamson



*Arctostaphylos × coloradensis*

(ark-toe-STAF-il-lohs kol-low-rah-DEN-sis)

Pine Mat Manzanita



© Ray Daugherty



*Arctostaphylos uva-ursi*

(ark-toe-STAF-il-lohs oo-vah-ER-see)

Bearberry or Kinnikinnick



*Artemisia tridentata*

(ar-tem-EE-zsa try-den-TAH-tah)

Big Sagebrush



© Ray Daugherty

*Baccharis* 'Starn' PP11240 THOMPSON™

(BA-ka-ris)

Starn Thompson™ Desertbroom

*Berberis ×gladwynensis* 'William Penn'  
(BER-ber-iss glad-win-EN-sis)  
William Penn Barberry



© Keith A Williamson

*Buxus* spp.

(BUKS-us)

Common Box or Boxwood





© Ray Daugherty

*Cercocarpus intricatus*  
(ser-koe-KAR-pus in-trih-KA-tus)  
Littleleaf Mountain Mahogany

*Cercocarpus ledifolius*

(ser-koe-KAR-pus led-ih-FO-lee-us)

Curleaf Mountain Mahogany



© Ray Daugherty

*Cistus ×purpureus*

(SIS-tus pur-PUR-ee-us)

Orchid Rockrose, Purple Rockrose

*Cotoneaster glaucophyllus*  
(ko-TONE-ee-as-ter glaw-ko-FI-lus)  
Gray Cotoneaster

*Cotoneaster lacteus* (syn. *C. parneyi*)

(koh-TONE-ee-as-ter LACK-tee-us)

Milkflower Cotoneaster

*Cytisus* spp.  
(suh-TI-sus)  
Broom





© Ray Daugherty

*Dasytirion wheeleri*

(das-ee-LEER-ee-on WHEEL-er-eye)

Common Sotol

*Echinocereus* species  
(e-keen-o-KAY-ree-us)  
Hedgehog Cactus



*Elaeagnus ×ebbingei*  
(e-lee-AG-nus e-BING-gee-ee)  
Ebbing's Silverberry

*Ephedra* spp.

(ef-ED-drah)

Joint Fir



© Ray Daugherty

*Euonymus fortunei* cultivars  
(yew-ON-ih-mus for-TOON-ee-eye)  
Euonymus; Wintercreeper





© Ray Daugherty

*Euonymus japonicus*  
(yew-ON-ih-mus ja-PON-i-kus)  
Japanese Spindletree

*Euonymus kiautschovicus* 'Manhattan'  
(yew-ON-ih-mus kye-oh-TSHOW-vih-kus)  
Manhattan Euonymus



© Ray Daugherty

*Hesperaloe parviflora*

(hes-per-A-lo par-vih-FLO-ra)

Red False Yucca

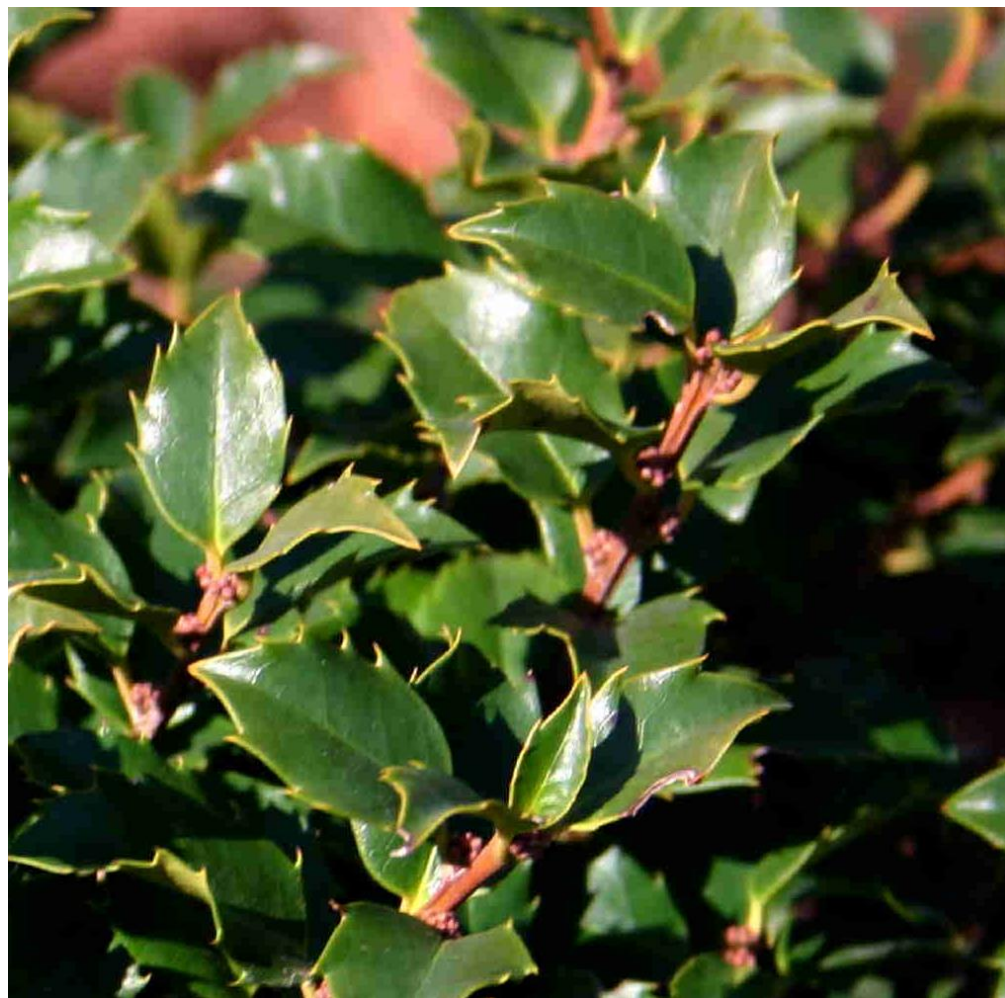


© Keith A Williamson

*Ilex × meserveae*

(EYE-leks mez-ERV-ee-ay)

Meserve Hybrid Holly



© Ray Daugherty



*Ilex vomitoria* cultivars  
(EYE-leks vom-ih-TOR-ee-a)  
Yaupon, Holly

*Juniperus communis* & cultivars  
(joo-NIP-er-us co-MYU-nus)  
Common Juniper



*Juniperus horizontalis* cultivars  
(joo-NIP-er-us hor-ih-zon-TAL-iss)  
Creeping Juniper



© Ray Daugherty

*Juniperus* ×media cultivars (= *J. ×pfitzeriana*)

(joo-NIP-er-us MEE-dee-a)

Hybrid Spreading Juniper



*Juniperus procumbens* (*J. chinensis* var. *procumbens*)

(*joo-NIP-er-us PRO-come-bins*)

Green Mound Juniper





© Ray Daugherty

*Juniperus sabina* & cultivars  
(joo-NIP-er-us suh-BEE-nuh)  
Savin Juniper



© Ray Daugherty

*Juniperus squamata* 'Blue Star'  
(joo-NIP-er-us skwam-AY-tah)  
Blue Star Flaky Juniper



© Ray Daugherty

*Leucophyllum* spp.

(lu-ko-FI-lum)

Texas Sage, Barometerbush

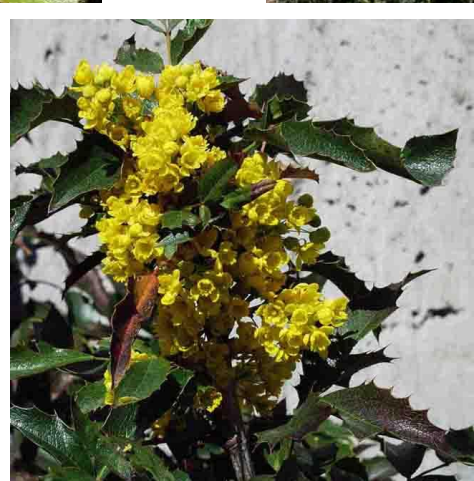
*Ligustrum japonicum* 'Texanum'  
(lih-GUS-trum ja-PON-ih-kum)  
Texas Waxleaf Privet

*Mahonia aquifolium*

(mah-HOE-nee-ah ak-wih-FOE-lee-um)

Oregon Grape Holly





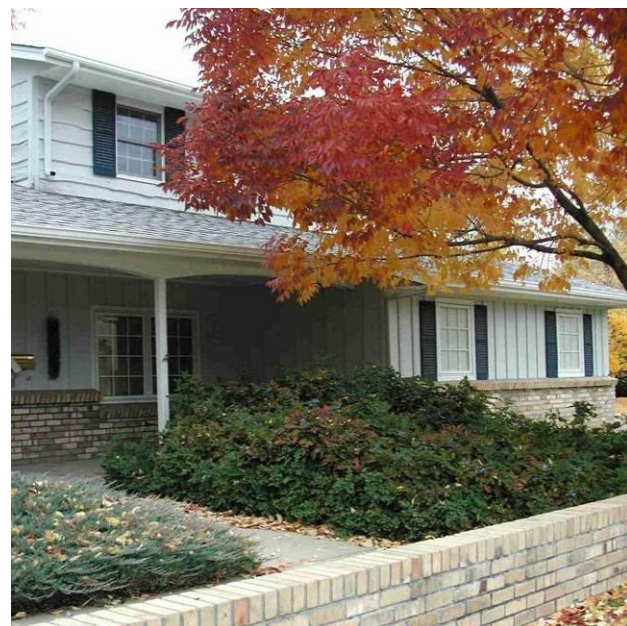
© Ray Daugherty

*Mahonia* (syn. *Berberis*) *haematocarpa*  
(mah-HOE-nee-ah he-ma-toe-CAR-pa)  
Red Barberry, Algerita

*Mahonia repens*

(mah-HOE-nee-ah REH-pens)

Creeping Oregon Grape Holly



© Ray Daugherty

*Nandina domestica*

(nan-DEE-na do-MES-ti-ka)

Heavenly Bamboo

*Nerium oleander*

(NEER-ee-um OH-lee-an-der

Oleander

*Nolina microcarpa*

(no-LEE-nuh my-kro-KAR-pa)

Bear Grass



©Keith A Williamson



*Opuntia* cultivars

(o-PUN-tee-a)

Cholla Cactus, Pricklypear Cactus



© Keith A Williamson

*Photinia ×fraseri*

(fo-TIN-ee-a FRAY-zee-ree)

Fraser's Photinia, Red Tip Photinia

*Pittosporum tobira* cultivars

(pi-TOS-po-rum to-BI-ra)

Evergreen Mockorange, Japanese Cheesewood

*Poliomintha maderensis*

(po-lee-o-MIN-tha mad-er-EN-sis)

Mexican Oregano

*Purshia mexicana* (syn. *Cowania mexicana*)

(PUR-shee-a mex-ih-KA-na)

Cliffrose



©Keith A Williamson

*Purshia tridentata*

(PUR-shee-a try-den-TA-ta)

Antelope Bitterbrush





© Keith A Williamson

*Pyracantha* spp.  
(py-rah-KAN-thah)  
Firethorn



© Ray Daugherty

*Quercus turbinella*

(KWER-kus tur-bin-ELL-a)

Shrub Live Oak, Sonoran Scrub Oak



*Raphiolepis indica*  
(raf-ee-o-LEP-is Indi-ka)  
Indian Hawthorn

*Salvia clevelandii*

(SAL-vee-a kleev-LAND-ee-ee)

Chaparral Sage, Fragrant Sage

*Salvia greggii* cultivars & hybrids  
(SAL-vee-a GREG-ee-ee)  
Cherry Sage, Autumn Sage





© Keith A Williamson

*Taxus × media*  
(TAX-us MEE-dee-ah)  
Yew



© Ray Daugherty

*Yucca* spp.  
(YUK-ah)  
Yucca



© Ray Daugherty